



 **TACBAG**



FASTER. SAFER. MORE EFFICIENT.

.....

Fire operations involve a high level of risk for firefighters due to physical exertion and mental stress. These operations are always influenced by the “time factor,” particularly the deployment of hose lines, which plays a critical role.

With the **TACBAG**, deployment time can be significantly reduced while minimizing the effort required for hose management. This saves valuable time for rescuing people and considerably reduces the risk for emergency personnel.



5

TACBAG
Structure fire



7

TACBAG
Rapid Intervention Team (RIT)



9

TACBAG
Aerial operations



11

TACBAG
Quick water supply



15

TACBAG
Technical specifications



TACBAG carried by the crew



TACBAG precisely positioned

STRUCTURE FIRE

.....

TACBAG carried by the crew:

The **TACBAG** can be easily positioned and connected anywhere, making it immediately ready for use. After the nozzle is bled, the crew can advance into the fire without having to worry about hose management (e.g., flaking the hose). The hose deploys smoothly from the **TACBAG**, reducing fatigue and allowing the crew to fully concentrate on rescue or firefighting operations.

TACBAG precisely positioned:

The **TACBAG** can be left in place so that the team advances using only the required hose line, without having to carry the bag further.



Ready for immediate use in emergency situations

RAPID INTERVENTION TEAM (RIT)

The **TACBAG** was designed for scenarios requiring rapid intervention while minimizing the risk of errors under stress. It can be pre-connected by the rapid intervention team during operations and is immediately ready for use.

In an emergency, the team can reach injured interior crews without worrying about hose management or hoses getting snagged. This allows them to focus entirely on rescue operations and provide assistance quickly and effectively.



Fast and effective approach



TACBAG on a ladder truck support attachment with retraction function

AERIAL OPERATIONS

.....

Using an aerial rescue vehicle for firefighting or searching fire-affected areas can be tactically advantageous.

The **TACBAG** can be mounted directly onto the rescue basket of the ladder and is immediately ready for use. The crew can decide whether to take the **TACBAG** into the building or leave it on the basket.

The entire hose line remains outside the rescue basket, keeping it free for rescue operations and avoiding restrictions for the crew. During operations, the required hose length can simply be pulled out and used for firefighting.



Alternative to the quick attack system

QUICK WATER SUPPLY

.....

The **TACBAG** saves space and weight when used as a quick water supply system while offering all the advantages of a traditional quick attack reel. When stored in the vehicle, the system can be pre-filled with water, and the required hose length can be deployed similarly to a quick attack system.

If needed for other applications, the **TACBAG** can be easily removed and used for various fireground operations. After use, it can be emptied using compressed air and quickly rolled up again using the roll-up box.



Alternative to the quick attack system

WILDFIRE SUPPRESSION

In vegetation fires, every second counts: fires spread rapidly and endanger people, emergency responders, and nature. With a suitable front-mounting system, the DLK mounting bracket for the **TACBAG** can be specifically used for vegetation fire suppression. The mounting plate enables fast and secure deployment of the **TACBAG**.

The front-mounted storage system makes the **TACBAG** highly versatile in a wide range of scenarios. The hose line can be deployed and retracted quickly and easily, while the operator always maintains visual contact with the advancing crew ("Pump and Roll"). At the same time, the system allows flexible movement in all directions, with only the hose length actually required being deployed. Sagging of the hose line is prevented, significantly reducing the risk of snagging during operations.



TACBAG 26 - BASIC

.....

Due to its compact size, the **TACBAG 26 – Basic** is particularly easy to handle. It is suitable for fire attack, rapid intervention teams, and aerial rescue operations.



TACBAG 31 – ALLROUNDER

.....

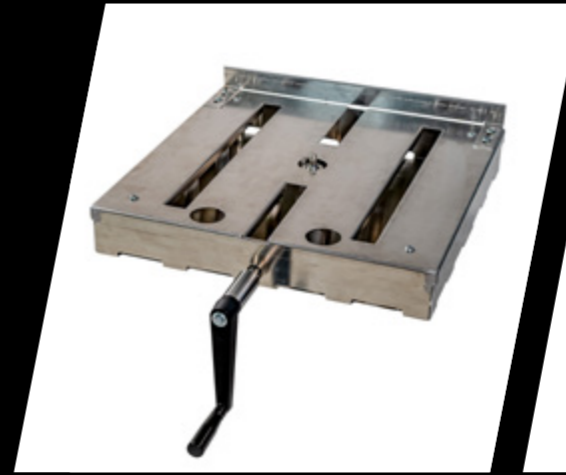
With a hose length of 31 m, the **TACBAG 31 – Allrounder** achieves the same operational range as two C-lines. It can be attached to an aerial rescue vehicle within seconds or used by advancing teams for rapid interior operations.



TACBAG 36 – INDUSTRY

.....

The **TACBAG 36 – Industry** is specifically designed for properties with large fire compartments. With a 36 m hose line, it is ideal for industrial facilities as well as ship or aircraft firefighting.



ROLL-UP BOX

.....

Vehicle-mounted holder with integrated roll-up system. The **TACBAG** can remain in the vehicle while the required hose length is deployed. After use, it can be rolled up using a hand crank without opening the bag.



LADDER TRUCK SUPPORT ATTACHMENT

.....

Mounting plate for attaching the **TACBAG** to the multifunctional holder on the rescue basket. It enables safe and fast deployment.



ROTATABLE COUPLING

.....

Rotatable couplings can be pre-installed for connection to fixed couplings (e.g., on the rescue basket).



www.tacbag.de | tacbag@stolz-aufrolltechnik.de

TECHNICAL SPECIFICATIONS

TACBAG	Basic	Allrounder	Industry
Length x Width (mm)	570 x 570	570 x 570	570 x 570
Height (mm)	340	380	420
Weight (kg)	22,5	25,0	27,5
Main hose length (m)	23,5	28,5	33,5
Short hose length (m)	2,5	2,5	2,5
Total length (m)	26,0	31,0	36,0
Flow rate (l/min @ 8 bar)*	290	265	245
Type	DIN EN rigid and robust		
Certification	DIN EN1947-II-B-5		
Connector	C-Storz coupling		
Diameter	D 27		

*Flow rate calculated without nozzle.

www.tacbag.de/produkte



Customized reels off the shelf

PURE INNOVATION – “MADE IN GERMANY”

.....

TACBAG is a brand of **STOLZ** Reeling Technology GmbH. **STOLZ** is a dynamic company and one of the few specialists in Germany in the development, design, and production of intelligent reeling systems. As an experienced manufacturer, we stand for a high level of vertical integration, reliable processes, and the highest quality “Made in Germany.” In addition, we develop and implement custom-made solutions tailored individually to specific requirements.

The possible applications of **STOLZ** reeling systems are virtually unlimited. A wide variety of hose types, diameters, media, drive systems, and designs all share one thing in common – they open up new opportunities across a wide range of industries. **TACBAG** is an example of our innovative strength – what began as a specialized development has evolved into a revolutionary series product.

www.stolz-aufrolltechnik.de | info@stolz-aurolltechnik.de



 **TACBAG**

STOLZ 
Roll-up technology

STOLZ Aufrolltechnik GmbH

Im Branden 33
D-88634 Herdwangen
Germany

Phone: +49 (0) 75 57 – 820 610

Internet: www.stolz-aufrolltechnik.de | www.tacbag.de

E-Mail: tacbag@stolz-aufrolltechnik.de